



# File Preparation Guidelines

---

How to prepare your graphic files for best results

C  
O  
M  
P  
L  
E  
T  
E  
  
T  
R  
A  
D  
E  
S  
H  
O  
W  
  
S  
E  
R  
V  
I  
C  
E  
S

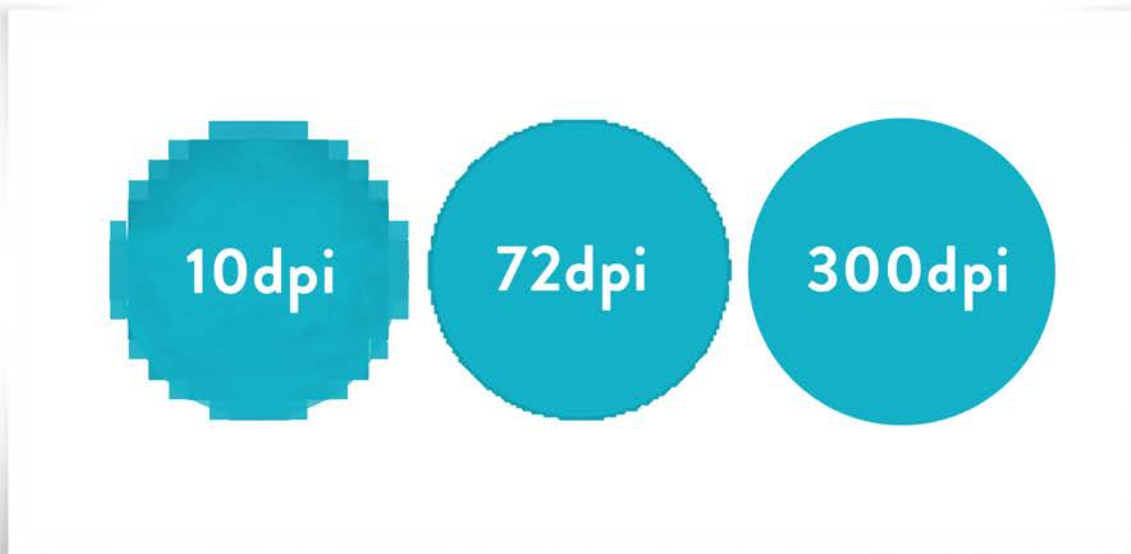
# RESOLUTIONS

## Maximum resolutions

In some instances, resolution on files are excessive. This causes long/incomplete download times and possible editing/processing delays. If you are not sure what resolution to use, you can contact us at [exhibitorservices@csiworldwide.net](mailto:exhibitorservices@csiworldwide.net).

## Visual comparison of different resolutions

The resolution comparison chart below is best viewed at 100% on on your monitor standing a few feet away. Based on viewing distance to graphics, some prints will look better than what you see on your monitor.



# MINIMUM RESOLUTIONS

## Minimum resolutions when viewing graphic from 4-8 feet away

The minimum resolution for a normal viewing distance of 4-8 feet should be 60dpi (100dpi is preferred) for art that is supplied at 100% (1:1) scale.

If the scale differs, the resolution must be increased accordingly:

- Artwork at 1:2 scale: 120dpi or more
- Artwork at 1:5 scale: 240dpi or more
- Artwork at 1:10 scale: 600dpi or more



## Minimum resolutions when viewing graphic from 15+ feet away

When viewing very large prints, such as banners, from a distance over 15 feet, the minimum resolution can be 30dpi (at 100% scale).

If the scale differs, the resolution should be the following:

- Banner art at 1:2 scale: 60dpi or more
- Banner art at 1:4 scale: 120dpi or more
- Banner art at 1:8 scale: 240dpi or more

# ADOBE PHOTOSHOP FILES

## Regular (Flat) Images

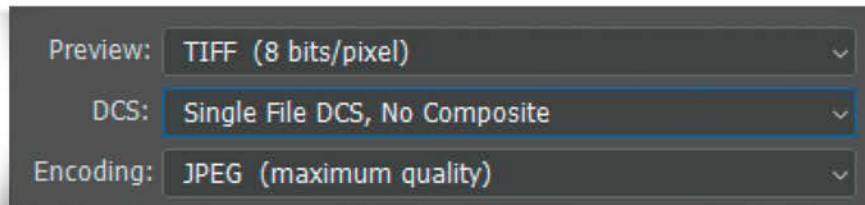
Save images as CMYK and choose Photoshop.eps format: Select 8-bit preview and jpeg (max quality).

**TIP:** Illustrator can take advantage of this format for very fast file handling. Select “use low resolution proxy for eps images” in illustrator preferences.

## Complex Images

If your images contain layers, clipping paths, spot colors, effects, etc, save as TIFF.

**TIP:** Select LZW compression. It’s a lossless compression that allows you to preserve layers, while decreasing file size.



## Adobe Creative Cloud

We welcome the use of Creative Cloud libraries and invite you to include Adobe Stock images and fonts in your library.



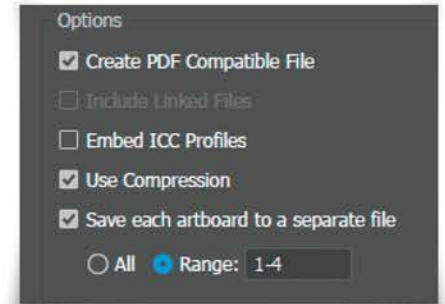
# ADOBE ILLUSTRATOR FILES

## Saving print files as .ai

Illustrator PRINT files can be saved as .ai files

Please match these settings:

- “Create PDF compatible file” MUST be on
- Artboards can be separated into individual files (range).

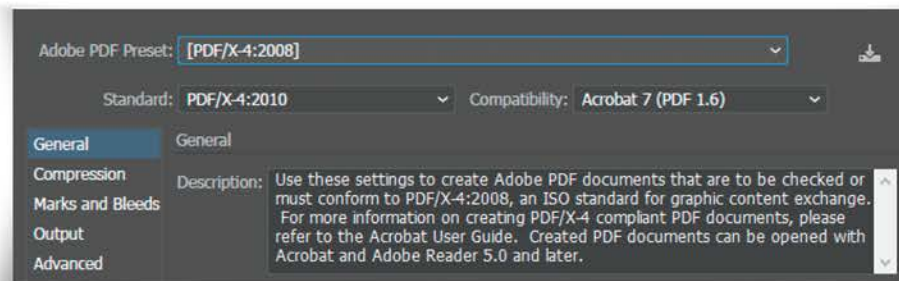


## Saving Print files as .pdf

Illustrator PRINT files can also be saved as a PDF.

It is very important to select the compatible PDF format.

- We recommend PDF/X-4 standard
- Select “Save each artboard to separate files” and “range”



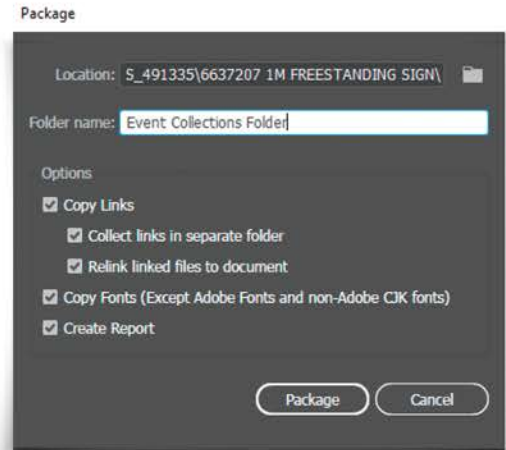
The best way to send files is to provide Packaged Native files from Illustrator accompanied with print files.

Illustrator Native files:

- Place all the images as links
- Save as a .ai file was “Use Compression” option
- “PRINT” folder

## Vector Art

Logos should be vector and have outlined fonts. If the vector version is not available, please provide high resolution images.



## Native Version (editable)

We strongly recommend submitting editable versions of the files as well, including links and fonts. This is valuable in case a new PRINT file must be generated. The best way to provide native files is by “Packaging” (file/package). If you are a Mac user and your fonts are other than .otf, please zip packaged files.

## Color Profiles

For accurate color preview, use profiles and settings listed below. Use the GRACoL2006\_Coated1v2 profile for CMYK and adobe RGB 1998 for RGB images. Please note that your screen has to be calibrated and profiled for accurate color rendering.

## Packaging

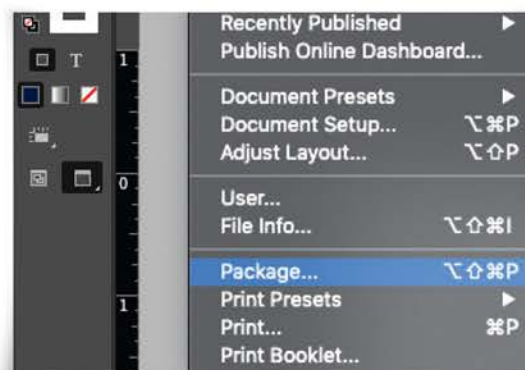
This is an important step because all the links and fonts that are needed will be collected. If you are using Mac fonts (non-OTF) please zip the folder before submitting. If you are not sure, you may outline the fonts.

# ADOBE INDESIGN FILES

## Native files

Save and package all the InDesign files included with Print PDF.

- “Create PDF compatible file” MUST be on
- Artboards can be separated into individual files (range).



## Package native files (INDD, links and fonts)

Go to file/package and complete the steps. Watch for any warning signs as some files might be missing.

